

Polyester Overview

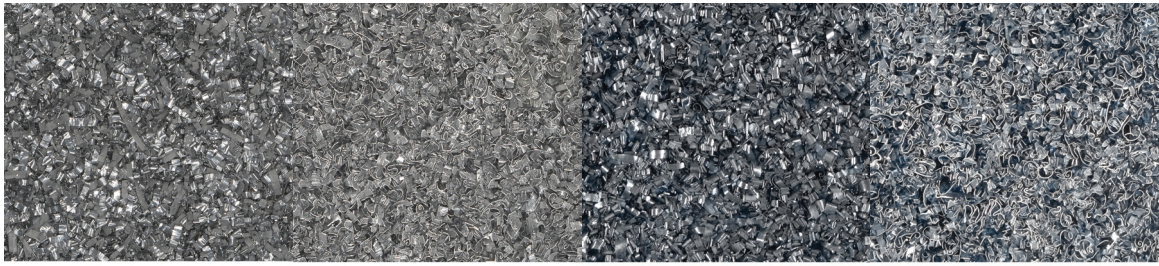
Award winning ALKEMI-polyester is a recycled surface material composed of post-industrial scrap waste (34% by weight—as certified—or 60% by volume). Made from fine flake aluminum milling scrap—which commonly burns up as a heavy smoke pollutant when exposed to conventional aluminum recycling—ALKEMI-polyester leaves no hazardous footprint.

Available in a variety of designer colors and surface aesthetics as Classic and Honed, ALKEMI-polyester may be fabricated and installed using standard solid surface fabrication methods. Strong, durable and exquisite to the eye, ALKEMI offers a brilliant, sustainable alternative to the stagnant commercial material options, such as solid surface, plastic laminate, stone and glass.

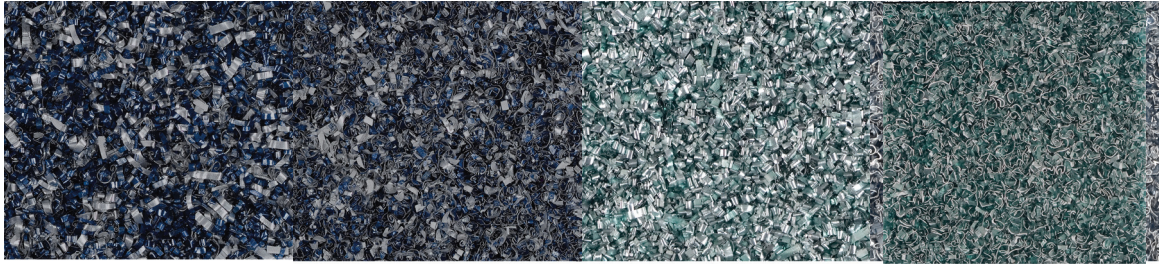
Finish Options:	Alkemi and Alkemi Anodize are available in classic and honed finishes. Alkemi Opaque is available in honed finish only.
Thickness:	1/2" and 3/4" (13 mm x 2438mm)
Sheet Dimensions:	36"x120" (914 mm x 3048 mm) 36" x 96" (914 mm x 2438 mm)

Renewed Materials, Inc.
P.O. Box 55
Cabin John, MD 20818-0055
T 301-320-0042
F 301-320-3341

www.renewedmaterials.com
www.alkemi.com



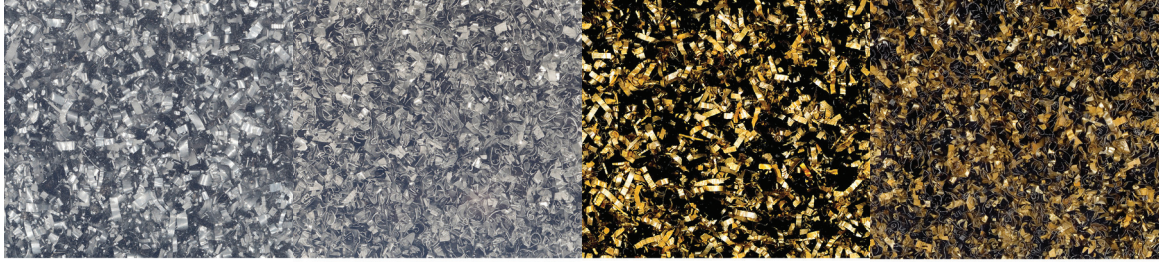
ALKEMI-polyester **Natural-10 Classic** ALKEMI-polyester **Natural-10 Honed** ALKEMI-polyester **Aegean-20 Classic** ALKEMI-polyester **Aegean-20 Honed**



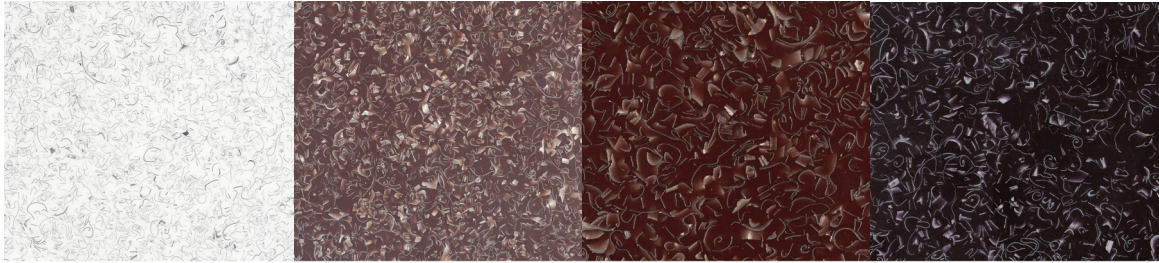
ALKEMI-polyester **Lapis-25 Classic** ALKEMI-polyester **Lapis-25 Honed** ALKEMI-polyester **Pod-30 Classic** ALKEMI-polyester **Pod-30 Honed**



ALKEMI-polyester **Elephant-40 Classic** ALKEMI-polyester **Elephant-40 Honed** ALKEMI-polyester **Koi-100 Classic** ALKEMI-polyester **Koi-100 Honed**



ALKEMI-polyester **Nebula-175 Classic** ALKEMI-polyester **Nebula-175 Honed** ALKEMI-polyester **Luxor-200 Classic** ALKEMI-polyester **Luxor-200 Honed**



ALKEMI-polyester **Lace-300** ALKEMI-polyester **Rootbeer-310** ALKEMI-polyester **Paprika-315** ALKEMI-polyester **Plum-330**



ALKEMI-polyester **Kohl-350**